

ENABLING THE JAVA APPLLET ON INTERNET EXPLORER 10 UNDER WINDOWS 10

DOWNLOADING AND INSTALLING JAVA RUNTIME ENVIRONMENT

1. Download the Java Runtime Environment (JRE Version 8 Update 161) from the following link `jre-8u161-windows-x64.exe`
2. Run the installer. You may require elevated permissions to run on the PC required to check with the administrator. Follow the prompts



3. Install in the default folder location



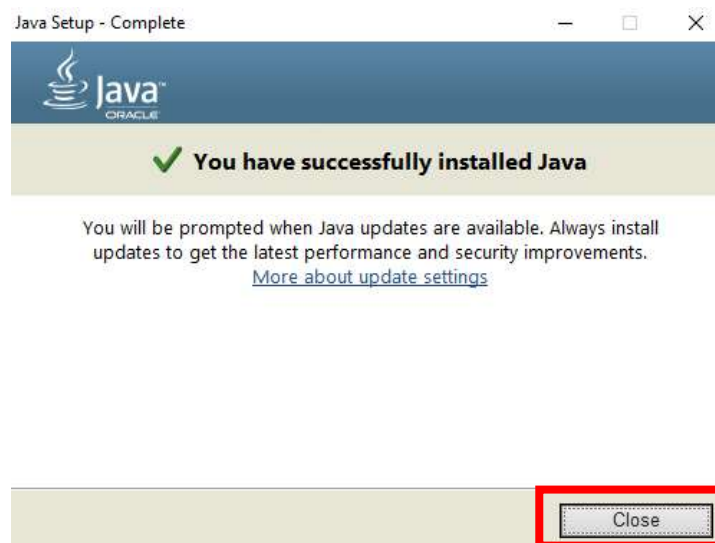
4. If other versions of java are installed, leave them for now and press the not now button



5. Once the installation is complete, press the next button

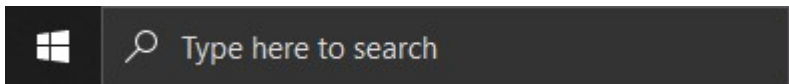


6. Java is now successfully installed. Press the close button.

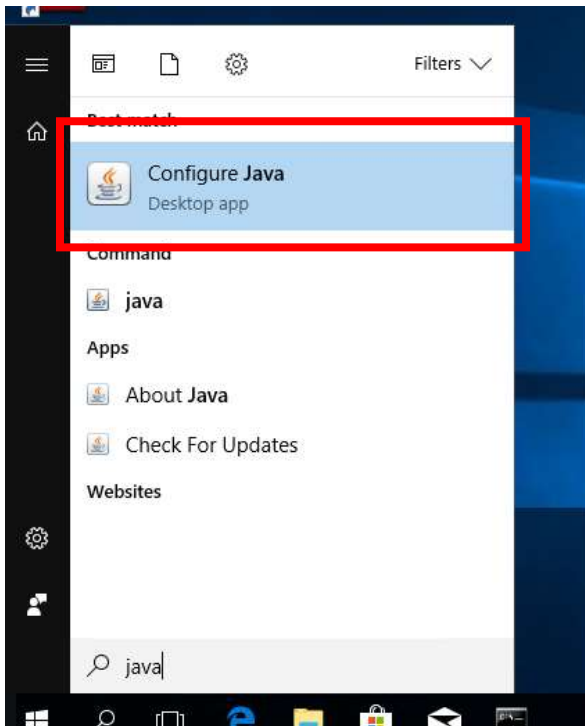


CONFIGURING JAVA TO RUN THE CORRECT JAVA RUNTIME ENVIRONMENT

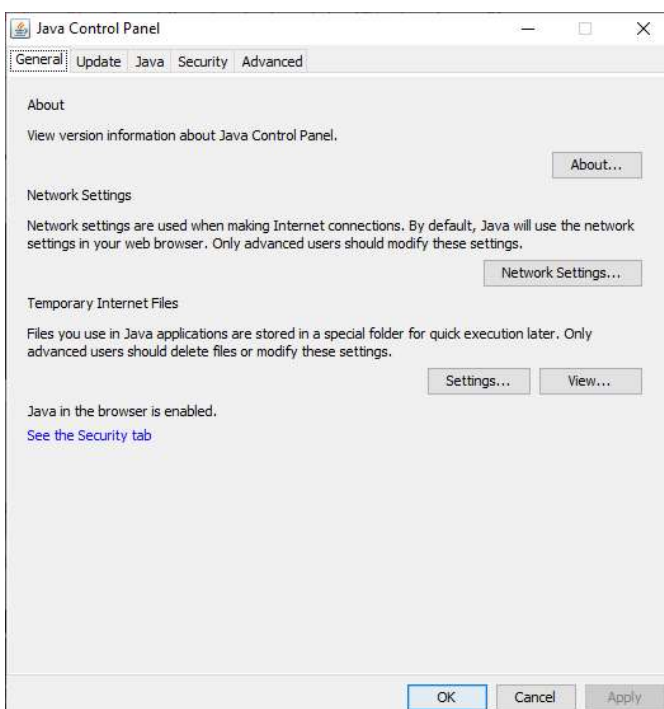
1. In the windows search box, type Java.



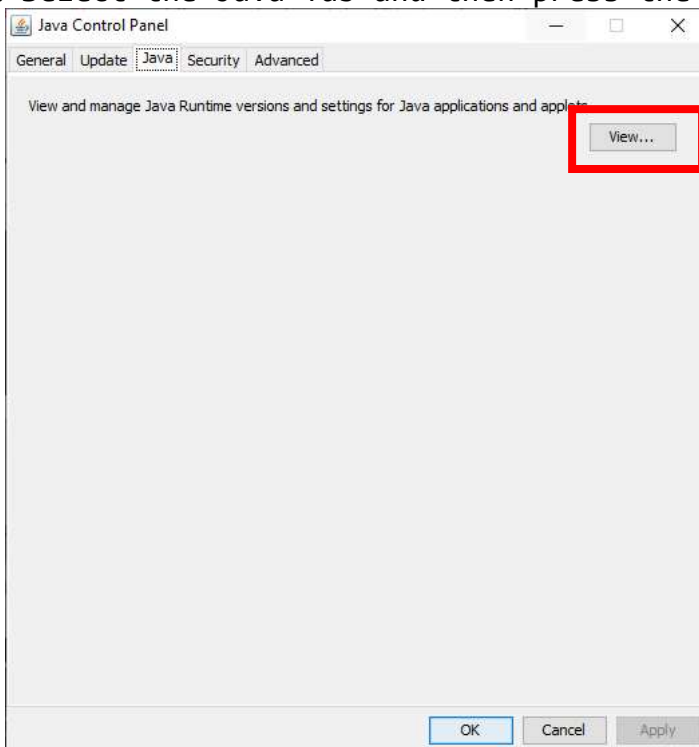
2. Select the Configure Java icon.



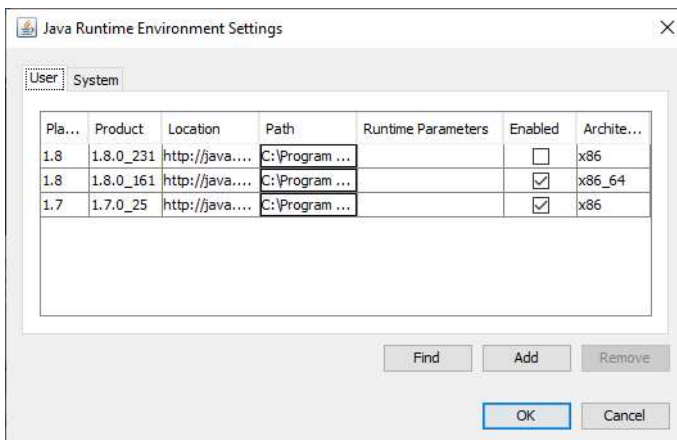
3. The Java Control Panel will open



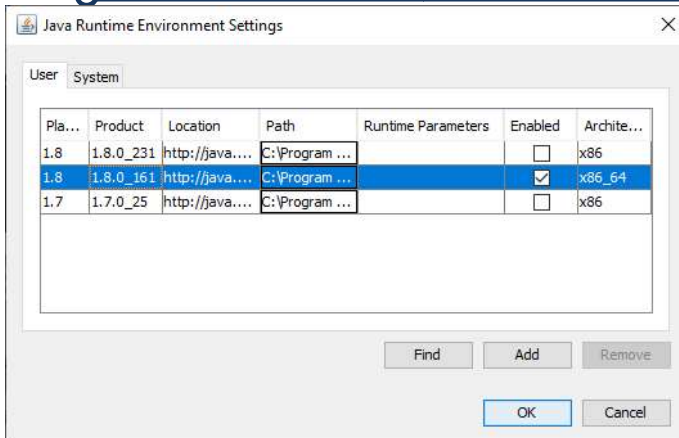
4. Select the Java Tab and then press the View button



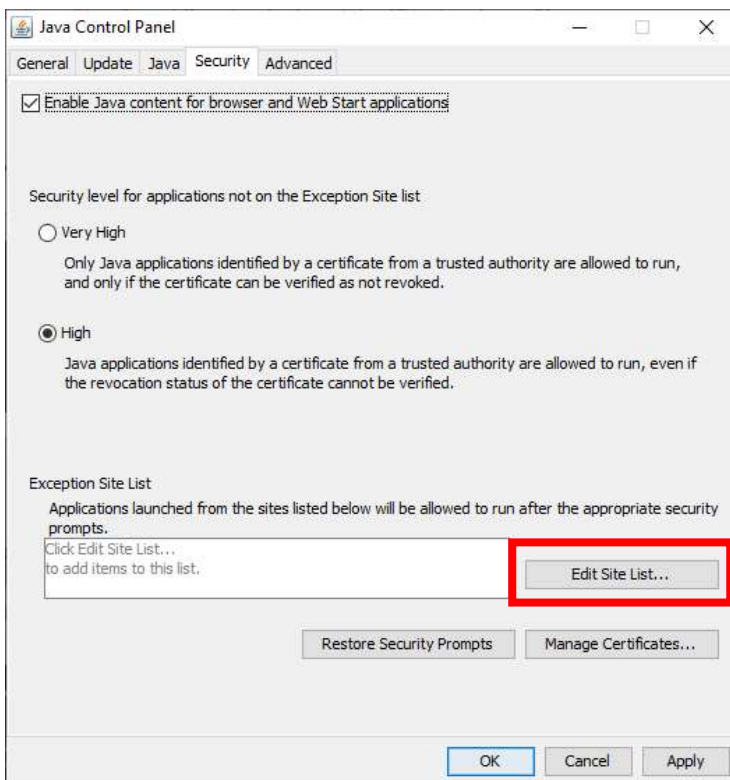
5. The Java Runtime Environment Settings window will open.



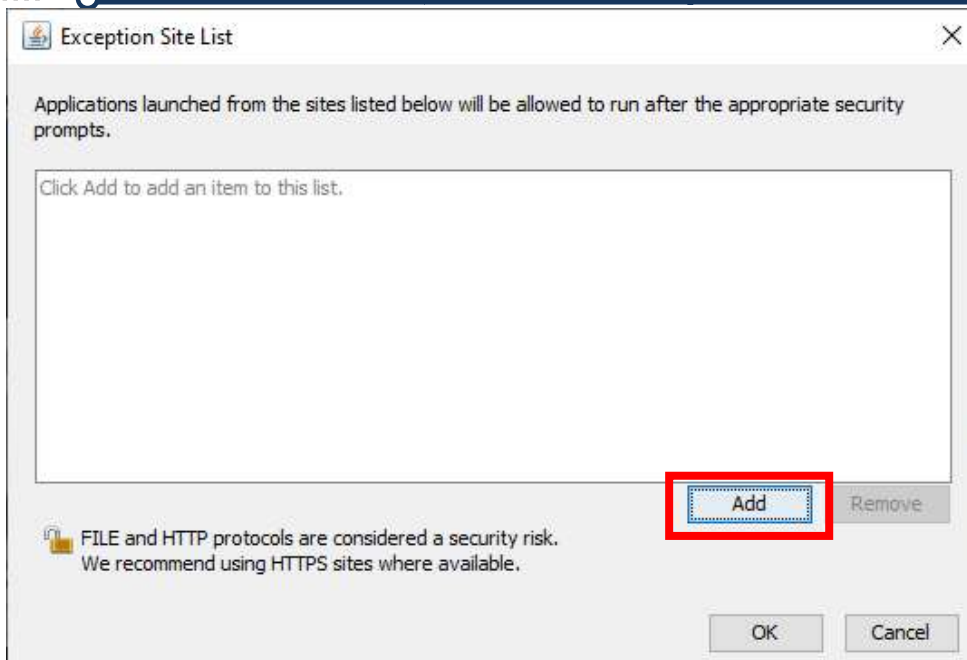
Enable the JRE1.8.0_161 update only. This will allow the java applet to run on the Ether IO's



6. Select the Security tab, check the security level is high and enable java content for browser and web start applications is set. Press the Edit Site List. button

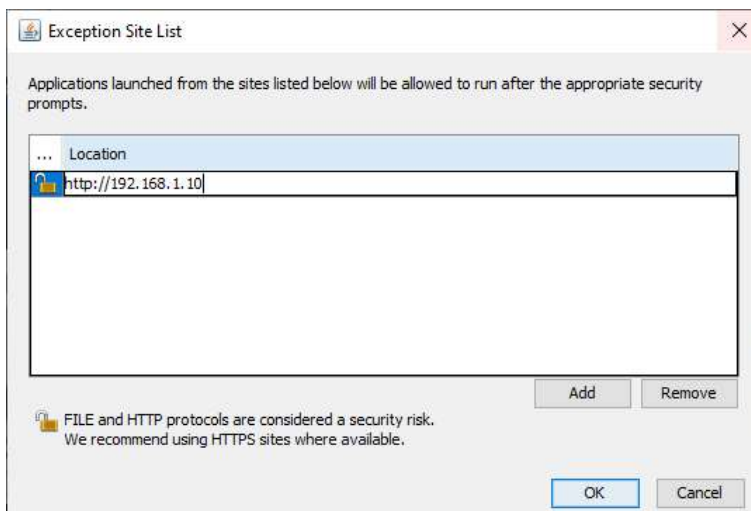


7. Add the exception to the list by pressing the Add button



The following exception can be added as the Ether I024 TCP can be configured to a fixed IP address by placing jumper four on the board; any other IP can be added once configured. NOTE: make sure that the IP address and the subnet mask are within the same subnet to allow for communications between the Ether I024TCP and the computer.

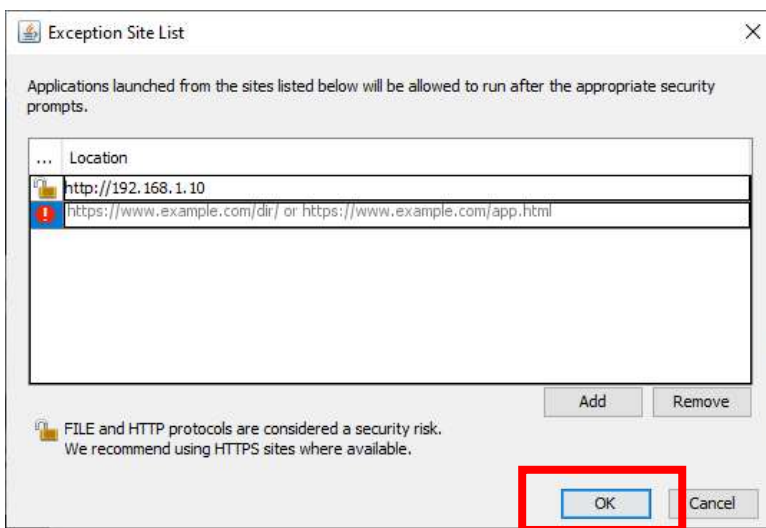
For example 192.168.1.10



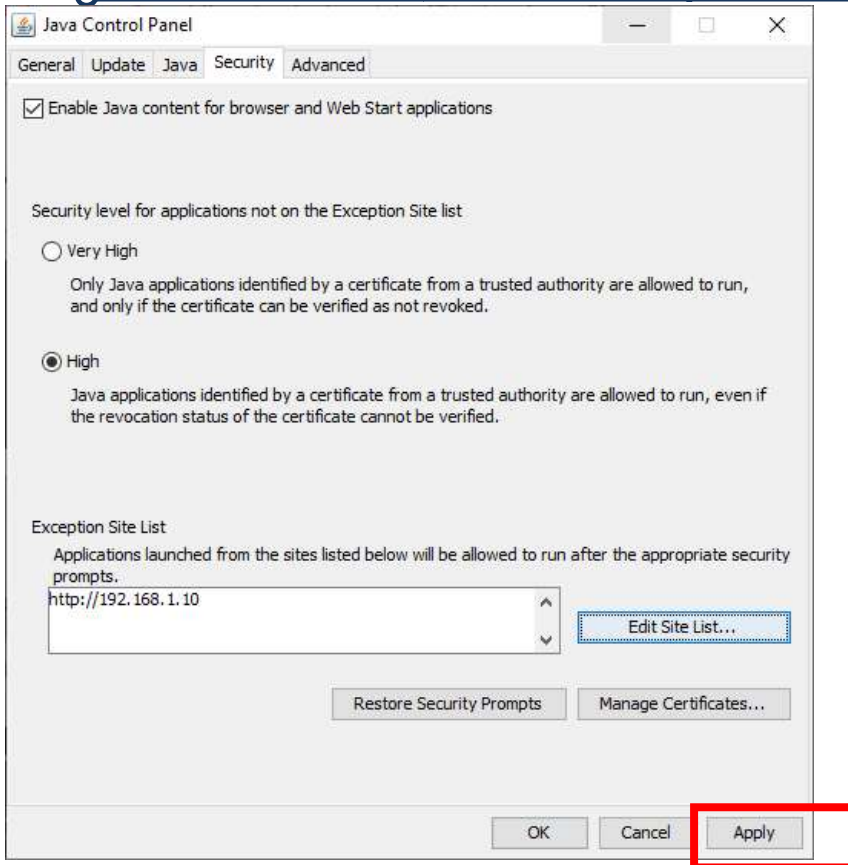
Enter the exception, and the following pop up will appear. Press the continue button, and the exception is now added.



The exception is added press the OK button.



8. Press the Apply button on the Security Tab.



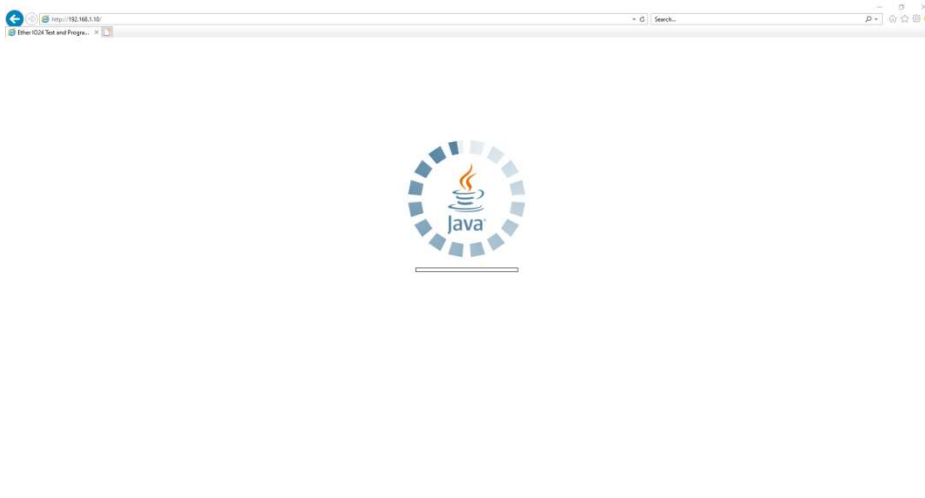
Press the OK button to exit the Java Control Panel.

RUNNING INTERNET EXPLORER AND ENABLING JAVA APPLET

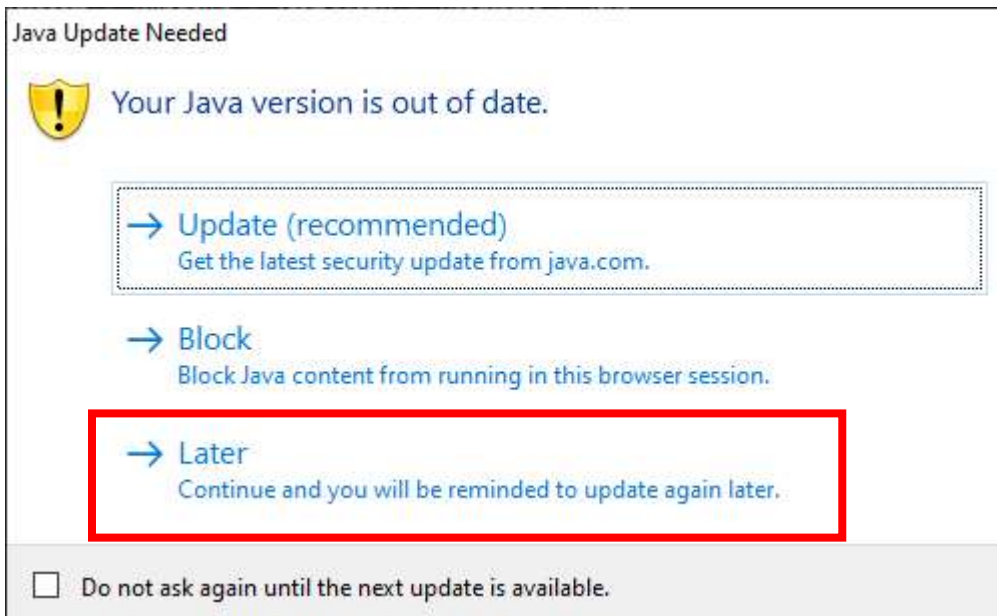
1. In the search box, type Internet Explorer and run the Internet explorer.



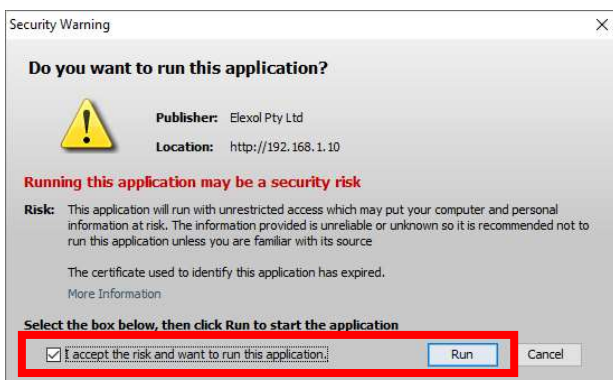
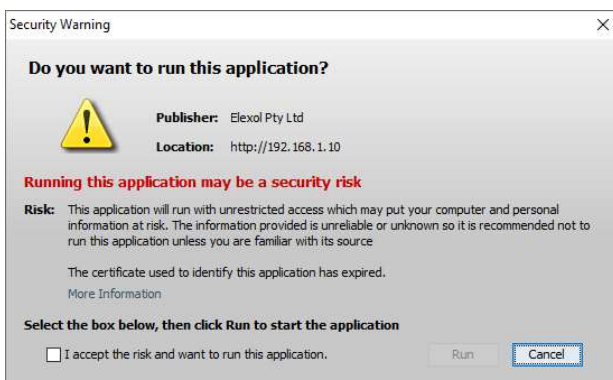
In the address bar, type <http://192.168.1.10> and press enter.



- The following java Update window may appear press the later button. Then select Do not ask again until the next update is available can be selected.



The java applet will attempt to load in the internet explorer; however, the following security application will appear, allow this warning.



The Java applet will appear in Internet Explorer, and the Ether IO device can now be accessed directly from the applet.