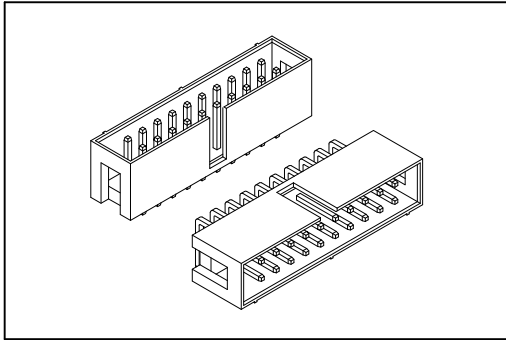


# 3012 Series

## Box Header 2.54mm(0.100")



### Material:

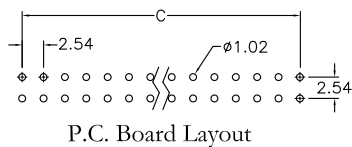
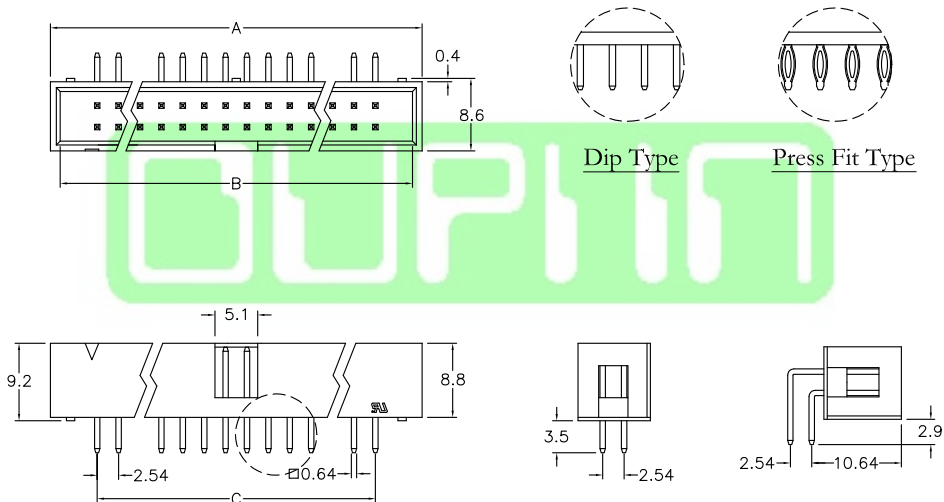
Housing: Thermoplastic Polyester Glass Filled UL94V-0.  
Contacts: Copper Alloy.

### Electrical Characteristics:

Current Rating: 2 A.  
Dielectric Withstanding Voltage: AC 1000V.  
Insulator Resistance: 1000M $\Omega$  min.  
Contact Resistance: 20m $\Omega$  max.  
Operating Temperature: -40°C~+105°C.

### Features:

- \* Fully shrouded provides ultimate reliability.
  - \* With center polarization.
  - \* Straight, Right Angle and Wire Wrap.
  - \* Additional plating options available.
- Mates with: 1001,2043,2044,2045,2046,2047.



Position	Dimension		
	A	B	C
10	20.34	18.10	10.16
14	25.48	23.18	15.24
16	27.90	25.72	17.78
20	33.05	30.80	22.86
26	40.68	38.42	30.48
30	45.70	43.50	35.56
34	50.80	48.58	40.64
40	58.46	56.20	48.26
50	71.10	68.90	60.96
60	83.80	81.60	73.66
64	89.10	86.68	78.74

## Ordering information

**3012-** Series   
**64** No. of Pin Count   
**G** G: Gold Plated   
**00** 00: G/F   
**S** S: Straight   
**P** Blank: Dip Type   
**B** B: Black   
**A** A: Tray Package  
**C** C: Selective Gold Plated   
**R** R: Right Angle   
**P** P: Press Fit Type   
**Y** Y: Grey  
 \*SW: Straight Wire Wrap

\* Currently only full gold plated Straight wire wrap available and dip length is 19.3mm.

\*\* Consult factory for Right Angle press fit drawing.