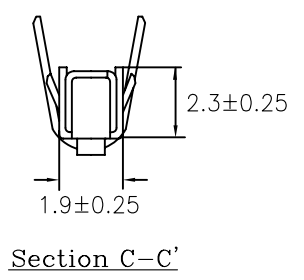
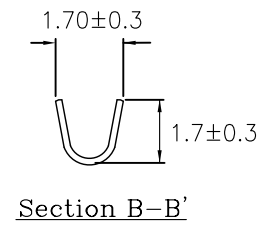
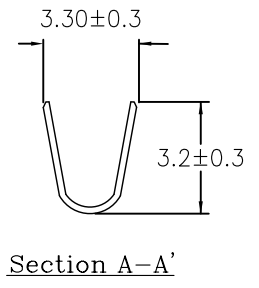
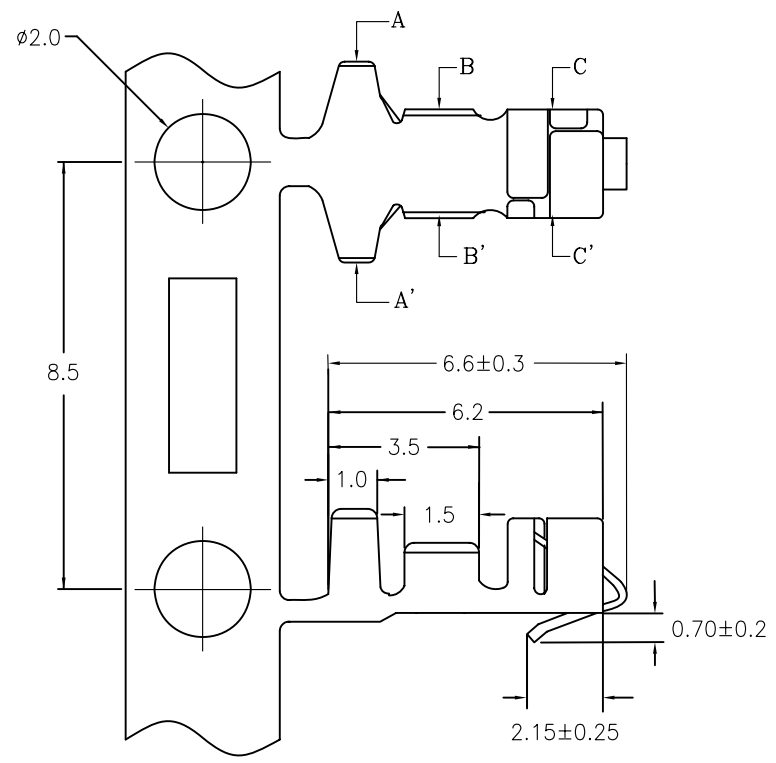


REV.	SPECIFICATION	ECN NO.	APPD.

**Material:**  
Terminal: Copper Alloy.  
Wire Range: AWG#22~#28  
**\*RoHS Compliant**



4672 - PIN-T-8K-XH  
Series T: Tin Plated 8K Pin Per Reel

<b>Tolerances</b> x = ±0.5 .x = ±0.25 .xx = ±0.15	<b>Dwg. No.</b>	4672P02002		<b>Title:</b> 4672 Series 2.5mm Terminal	 <b>OUPIIN ELECTRONIC(KUNSHAN) CO., LTD.</b>			
	<b>Projection</b>							
	<b>Unit</b>	mm	<b>Scale</b>		1:1	<b>SHEET</b>	1/1	<b>Ver.No.</b>
<b>Drawn By</b>	PEGGY08/16'12		①704					